

Oracle Analytics Repository Deployment Guide
Oracle FLEXCUBE Universal Banking
Release 14.5.2.0.0
Part No. F45976-01
[August] [2021]



Table of Contents

- 1. ORACLE ANALYTICS REPOSITORY DEPLOYMENT GUIDE 1-1
 - 1.1 INTRODUCTION 1-1
 - 1.1.1 FCUBS RPD 1-1
 - 1.2 DEPLOYMENT IN ORACLE ANALYTICS SERVER 1-1
 - 1.2.1 RPD Connection Changes 1-1
 - 1.2.2 Merge Repositories 1-5
 - 1.2.3 Deploying RPD using putty 1-7

1. Oracle Analytics Repository Deployment Guide

1.1 Introduction

This document explains the steps to be done on RPD and then how to deploy RPD in Oracle Analytics Server.

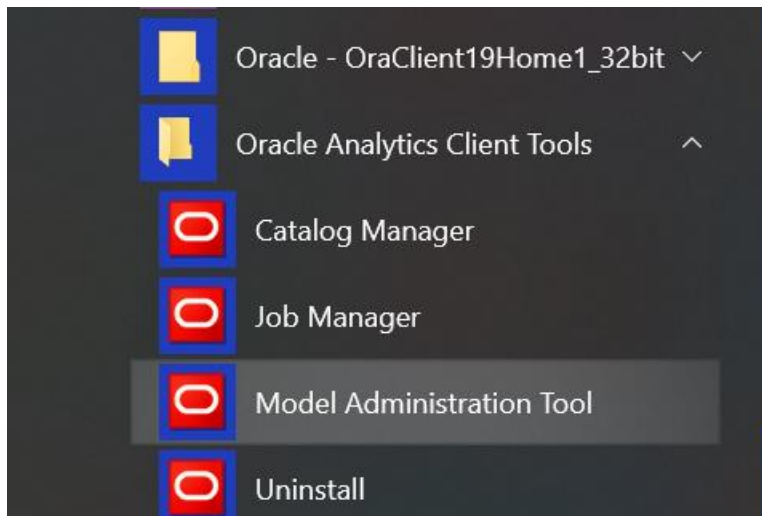
1.1.1 FCUBS RPD

In FCUBS we have module specific RPDs. They are named in the format Module Name.RPD (for example TD.RPD, SI.RPD etc.). In this document we will see how to change the database connection for these RPDs to point to the Reports Database, then merge all module specific RPDs to a single FCUBS Metadata RPD. We will also see how to deploy this RPD in Oracle Analytics Server.

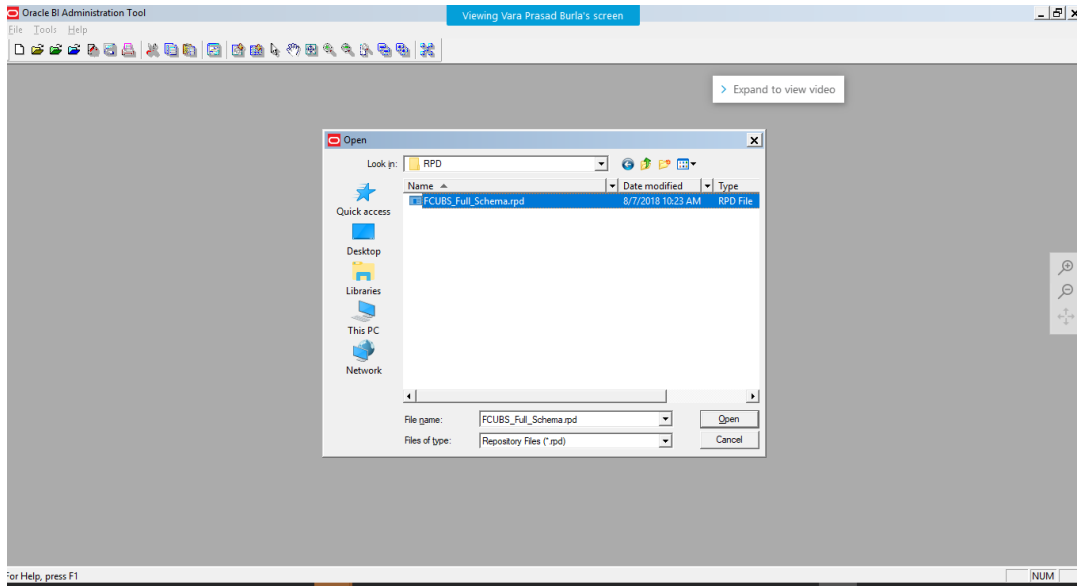
1.2 Deployment in Oracle Analytics Server

1.2.1 RPD Connection Changes

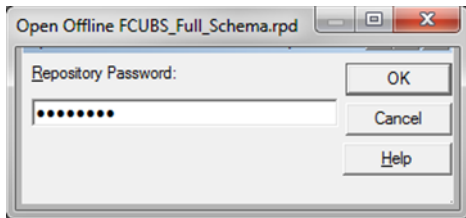
1. Open 'Model Administration' tool, under Oracle Analytics Client Tools.



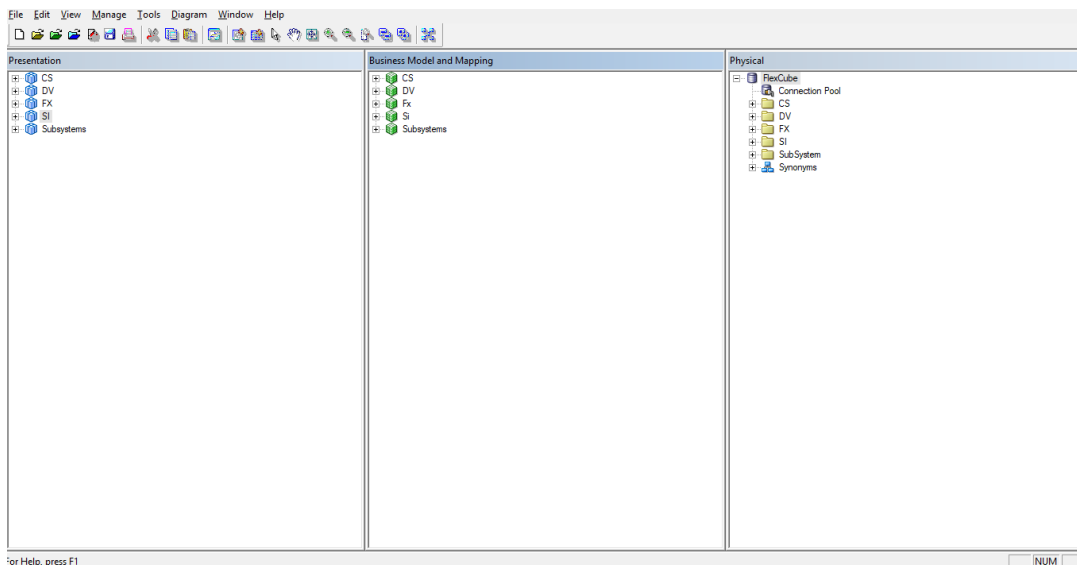
2. Open rpd in the offline mode.



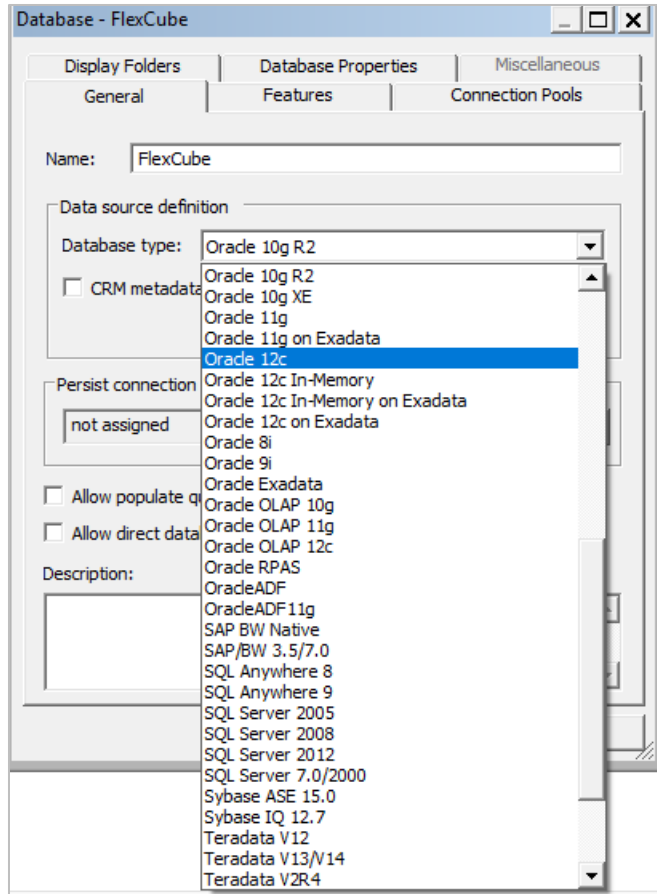
3. Enter the password as Admin123 and click 'OK'.



4. Double-click on the Flexcube in the physical layer present on the right. It opens the database properties.



5. In the Database Properties, change the Database Type to 'Oracle12c'.

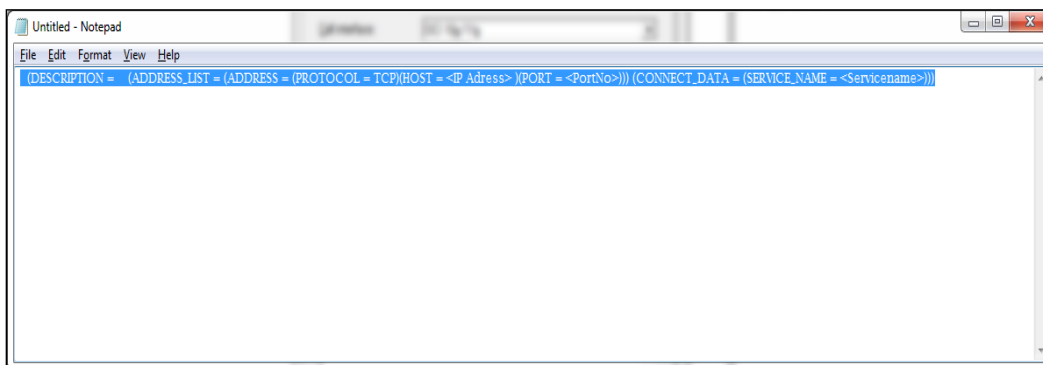


1. Change Data source name for the marked info given in the below format:

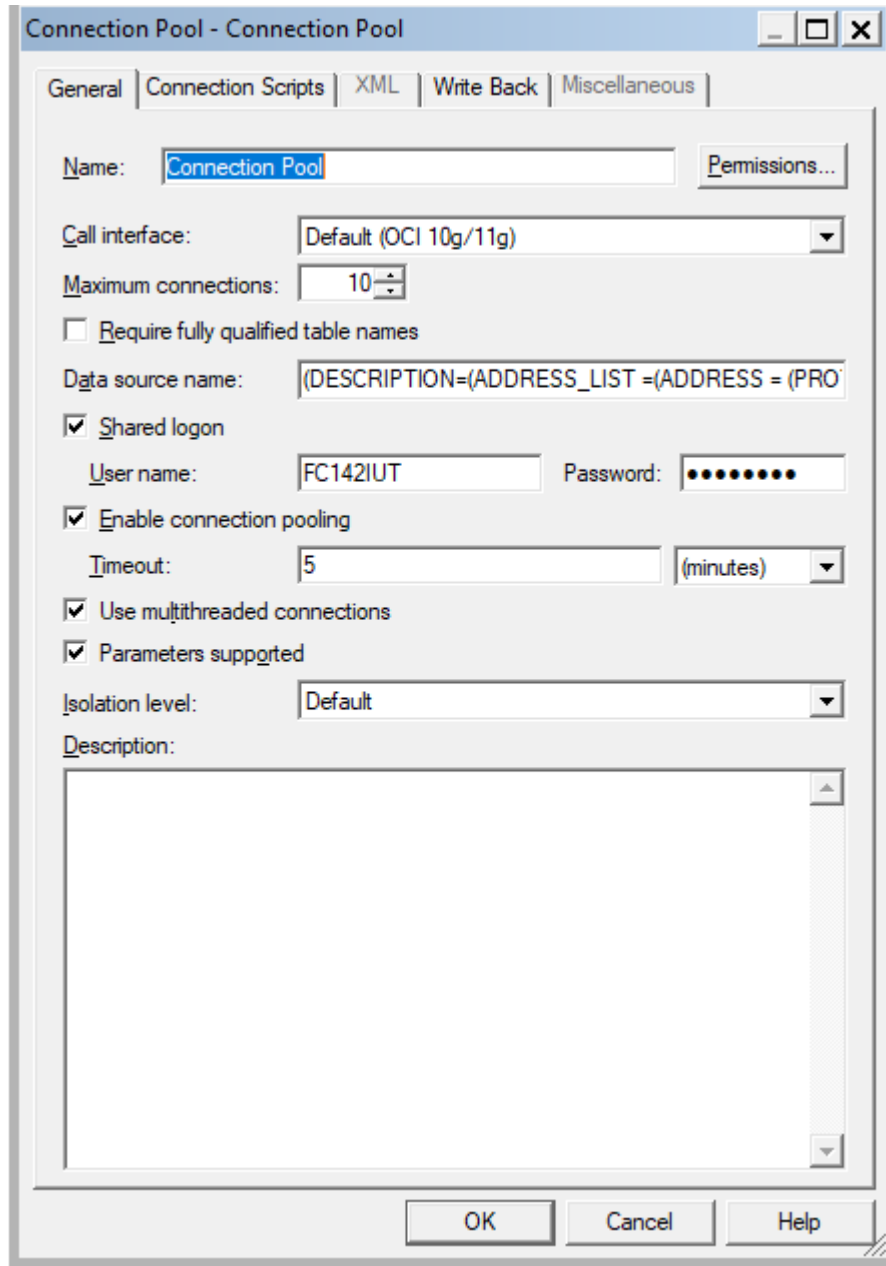
(DESCRIPTION = (ADDRESS_LIST = (ADDRESS = (PROTOCOL = TCP)(HOST = <Host Address>)(PORT = <Port>)))(CONNECT_DATA = (SERVICE_NAME <Servicename>)))

Eg:

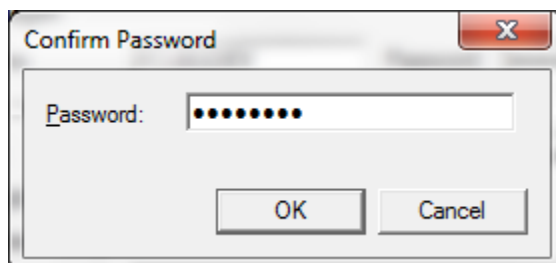
(DESCRIPTION=(ADDRESS_LIST =(ADDRESS = (PROTOCOL = TCP)(HOST = whf00brs.in.oracle.com)(PORT = 1522)))(CONNECT_DATA =(SERVICE_NAME = FC142DEVPDB2)))



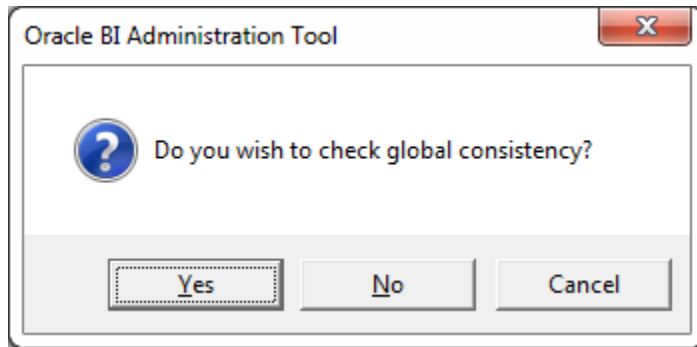
2. Enter the User ID and password and click OK. Again enter the same password when it prompts. Save the Rpd changes.



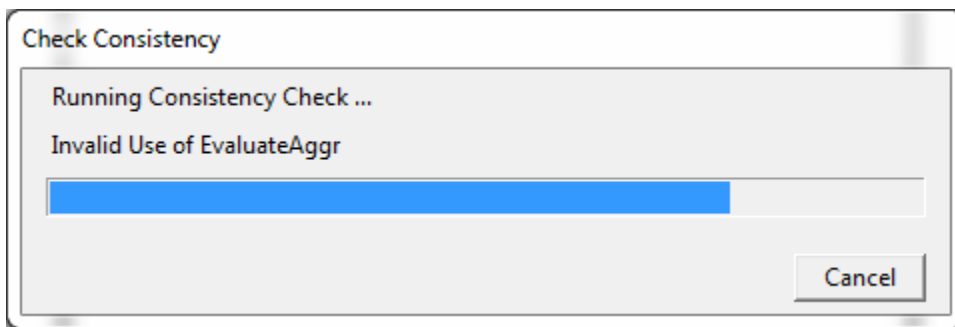
3. Click 'OK' and the following screen is displayed:



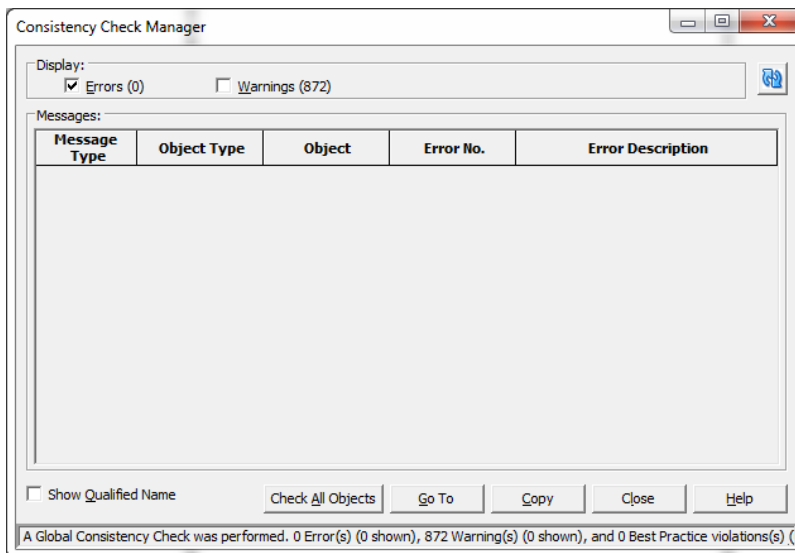
- Click 'OK' and the following screen is displayed:



- Click 'Yes'.



- Click 'Close' in below window.



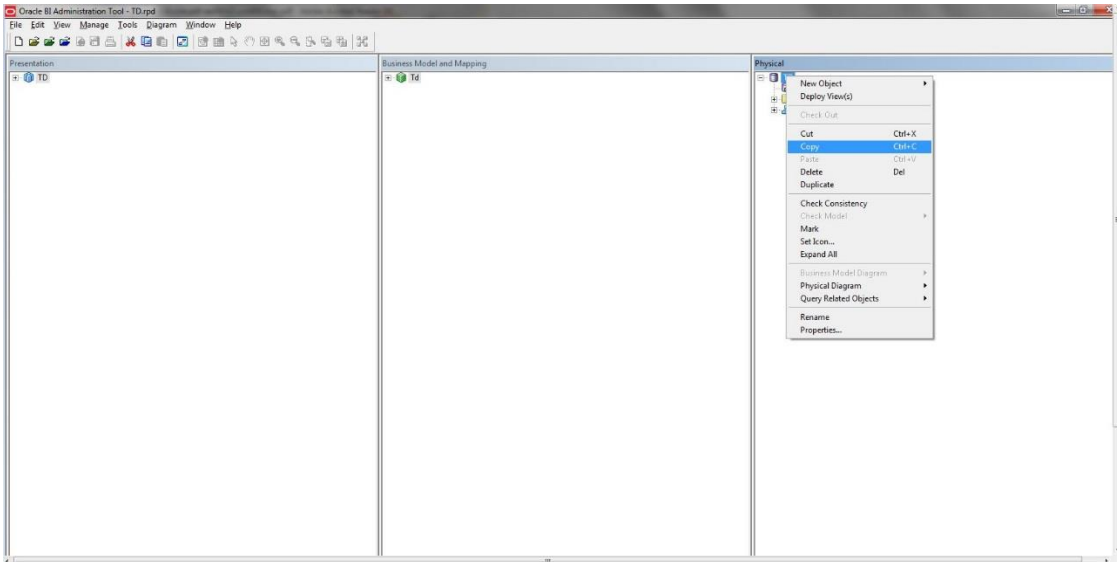
1.2.2 Merge Repositories

To Merge Repositories and to make FCUBS_Full_Schema.rpd we need to follow below steps.

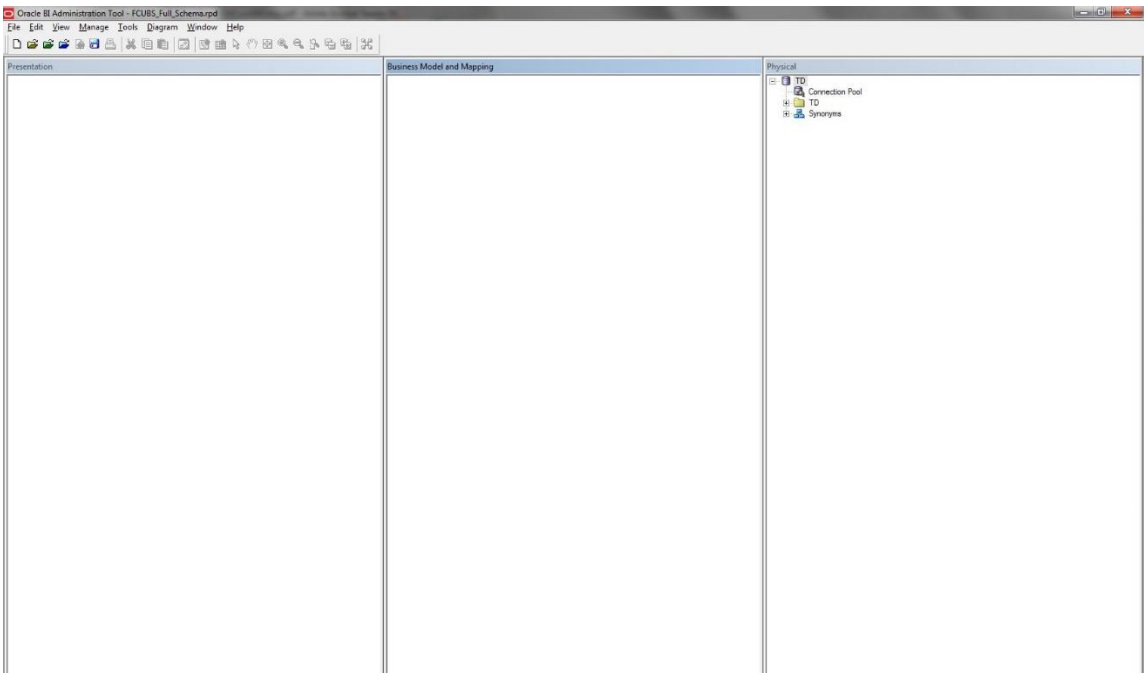
All the OBIEE repositories are in MAIN/<Module>/OBIEE_11g

- Open the 'FCUBS_Full_Schema.rpd' from svn. This is an empty repository.

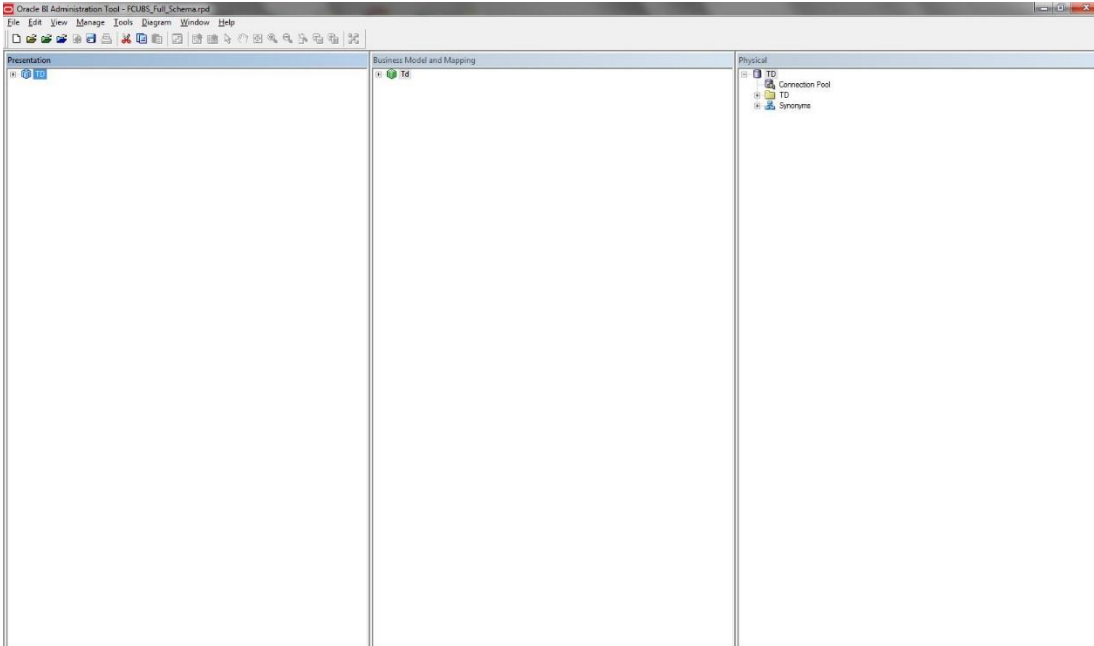
- Open the repository to be merged eg TD.rpd
- Copy TD folder under Physical layer in TD rpd and paste in physical layer of FCUBS_Full_Schema.rpd.



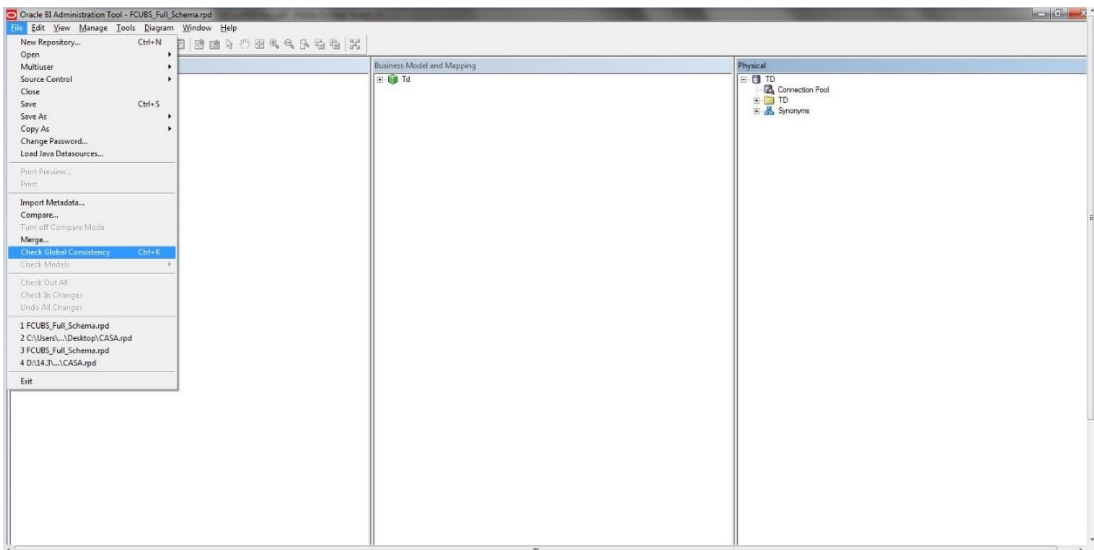
- After pasting, FCUBS_Full_Schema.rpd would look like below:



- Similarly copy the folders from Business model and Presentation layer from 'Td.rpd' to 'FCUBS_Full_Schema.rpd'. Then 'FCUBS_Full_Schema.rpd' would like below:



6. Please follow the order of Physical, Business Model and Presentation layer to paste in 'FCUBS_Full_Schema.rpd'.
7. Save the repository and do a global consistency check to see 0 errors. Similarly repeat the merging process for all modules.



1.2.3 Deploying RPD using putty

1. Copy the rpd in the below path in OBIEE server.
 Path : <Oracle_Home>/user_projects/domains/bi/bitools/bin
 Example Path : /scratch/app/obi12213/user_projects/domains/OBIEE12C/bitools/bin
2. Run putty and then go to path:

```
cd <Oracle_Home>/user_projects/domains/bi/bitools/bin
```

```
Example cd /scratch/app/obi12213/user_projects/domains/OBIEE12C/bitools/bin
```

3. Run the below command from the putty to deploy RPD.

Syntax:

```
sh data-model-cmd.sh uploadrpd -I <RPDname> [-W <RPDpwd>] -SI <service_instance> -U  
<cred_username> [-P <cred_password>] [-S <hostname>] [-N <port_number>] [-SSL] [-H]
```

Example:

```
sh datamodel.sh upload rpdc -I FCUBS_Full_Schema.rpdc -W Admin123 -SI ssi -U weblogic -P  
weblogic123
```



Oracle Analytics Repository Deployment Guide
[August] [2021]
Version 14.5.2.0.0

Oracle Financial Services Software Limited
Oracle Park
Off Western Express Highway
Goregaon (East)
Mumbai, Maharashtra 400 063
India

Worldwide Inquiries:
Phone: +91 22 6718 3000
Fax: +91 22 6718 3001
<https://www.oracle.com/industries/financial-services/index.html>

Copyright © [2007], [2021], Oracle and/or its affiliates. All rights reserved.

Oracle and Java are registered trademarks of Oracle and/or its affiliates. Other names may be trademarks of their respective owners.

U.S. GOVERNMENT END USERS: Oracle programs, including any operating system, integrated software, any programs installed on the hardware, and/or documentation, delivered to U.S. Government end users are "commercial computer software" pursuant to the applicable Federal Acquisition Regulation and agency-specific supplemental regulations. As such, use, duplication, disclosure, modification, and adaptation of the programs, including any operating system, integrated software, any programs installed on the hardware, and/or documentation, shall be subject to license terms and license restrictions applicable to the programs. No other rights are granted to the U.S. Government.

This software or hardware is developed for general use in a variety of information management applications. It is not developed or intended for use in any inherently dangerous applications, including applications that may create a risk of personal injury. If you use this software or hardware in dangerous applications, then you shall be responsible to take all appropriate failsafe, backup, redundancy, and other measures to ensure its safe use. Oracle Corporation and its affiliates disclaim any liability for any damages caused by use of this software or hardware in dangerous applications.

This software and related documentation are provided under a license agreement containing restrictions on use and disclosure and are protected by intellectual property laws. Except as expressly permitted in your license agreement or allowed by law, you may not use, copy, reproduce, translate, broadcast, modify, license, transmit, distribute, exhibit, perform, publish or display any part, in any form, or by any means. Reverse engineering, disassembly, or decompilation of this software, unless required by law for interoperability, is prohibited.

The information contained herein is subject to change without notice and is not warranted to be error-free. If you find any errors, please report them to us in writing.

This software or hardware and documentation may provide access to or information on content, products and services from third parties. Oracle Corporation and its affiliates are not responsible for and expressly disclaim all warranties of any kind with respect to third-party content, products, and services. Oracle Corporation and its affiliates will not be responsible for any loss, costs, or damages incurred due to your access to or use of third-party content, products, or services.